

Bourdon Tube Pressure Gauges

Polyamide Screw Ring Case
Standard (RK) or Liquid Filled (RKG)

Nom. Size 63 (2 1/2")
Accuracy 1.6 % f.s.

Models

RK 63
RKG 63

Application

For fluid and gaseous media (compatible to the wetted parts) which are not highly viscous and do not tend to polymerize, especially where a rugged, rust resistant, sealed case (dirty damp or corrosive atmosphere) is required.

Size

63 mm (2 1/2")

Accuracy Class

1.6 according to EN 837-1 (i.e. max. $\pm 1.6\%$ of full scale value);
2.5 for pressure ranges ≥ 600 bar ($\geq 8,000$ psi)

Pressure Ranges (EN 837-1)

Version -1: 0-0.6 up to 0- 600 bar (0-15 up to 0-10,000 psi)
Version -3: 0-0.6 up to 0-1,000 bar (0-15 up to 0-15,000 psi)
also all standard vacuum and compound ranges

Pressure Limitations

Steady pressure: 75% of full scale value
Cyclic pressure: 65% of full scale value
Temporary: full scale value

Protection Type (EN 60 529 / IEC 529)

Model RK: IP 54 / Model RKG: IP 65

Further information about advantages, applications, specifications and pressure ranges of Bourdon tube pressure gauges of accuracy class 1.0 to 2.5 can be found on **general information leaflet 1000**.

Standard Configuration

Connection

1/4" BSP (standard), optional 1/4" NPT, bottom connection (standard), optional lower back connection (ordering code letter: r)

Wetted Parts

Ordering Code - 1: Socket: = brass

Bourdon Tube:
 ≤ 40 bar, ≤ 600 psi = bronze, C-form,
soft soldered
 ≥ 60 bar, ≥ 800 psi = bronze, helical,
silver brazed

Ordering Code - 3: Socket: = 316 stainless steel
(1.4571)

Bourdon Tube:
 ≤ 60 bar, $\leq 1,000$ psi = 316 stainl. steel, C-form,
argon arc welded
 ≥ 100 bar, $\geq 1,500$ psi = 316 stainl. steel, helical,
argon arc welded

Movement

Version -1: brass/German silver, version -3: stainless steel

Dial

Aluminum alloy, black figures, white background

Pointer

Aluminum alloy, black

Case and Ring

Glass fiber reinforced polyamide 6 B black screw ring case

Case Filling (Model RKG only):

Glycerine

Lens

Polycarbonate

Safety Features

Top blow-out assembly



Optional Special Configurations

- Wetted parts monel = ordering code: - 6:
ranges 0-1 bar up to 0-600 bar resp. 0-15 up to 0-10,000 psi,
movement stainless steel, Bourdon tube argon arc welded,
 ≤ 60 bar and $\leq 1,000$ psi: C-form, ≥ 100 bar and $\geq 1,500$ psi: helical
- Connection M 12 x 1,5, 1/8" BSP or NPT, others upon request
- Inlet port restrictor screw brass, stainless steel or monel
- Special scales, combination pressure and temperature, other dual ranges, special units
- Receiver gauge 0.2-1 bar or 3-15 psi
- Maximum indicating pointer, external adjustment, acrylic lens (for pressure ranges $\geq 0-2.5$ bar resp. $\geq 0-30$ psi only)
- Micro-adjustable pointer
- Stationary red pointer on the dial
- Laminated safety glass lens
- Other than vertical installation or top or side connection
- Version -1 (socket brass) with pressure range 0-1000 bar, Bourdon tube 316 stainless steel, accuracy class 2.5

How to Order:

Please specify:

Model code: **RK 63** = dry version
RKG 63 = glycerine filled case
RK(G) 63 = fillable version

Wetted parts: ordering code -1, -3, or -6
compare left side resp. above

Case configuration: code letters: r, Rh, or rT
compare reverse side
(standard case = bottom connection,
no code letter required)

Pressure range: according to EN 837-1
e.g. 0-4 bar or 0-60 psi

Process connection: 1/4" BSP (= standard), or 1/4" NPT

Special Configurations: (see above)

Examples for Ordering Information:

- RK 63-3, 0-6 bar, 1/4" BSP
- RKG 63-1, rT, -1/+9 bar, 1/4" NPT



ARMATURENBAU GmbH

Manometerstraße 5 • D-46487 Wesel - Ginderich
Phone: (0 28 03) 91 30 - 0 • Fax: (0 28 03) 10 35
armaturenbau.com • mail@armaturenbau.com



Subsidiary Company and Sales East Germany and Eastern Europe

MANOTHERM Beierfeld GmbH

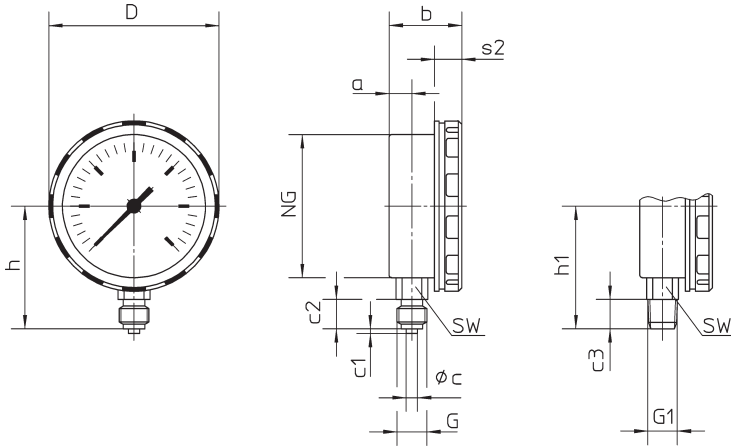
Am Gewerbepark 9 • D-08340 Beierfeld
Phone: (0 37 74) 58 - 0 • Fax: (0 37 74) 58 - 545
manotherm.com • mail@manotherm.com

1310

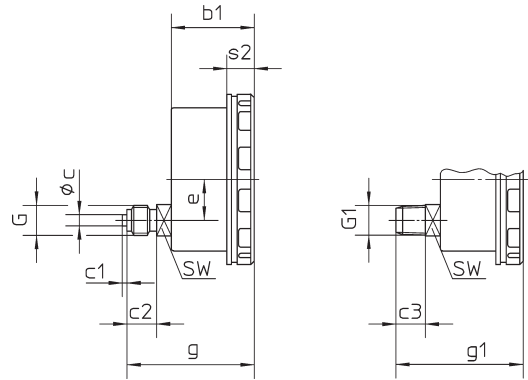
2/04

Case Configurations, Dimensional Data, and Weight

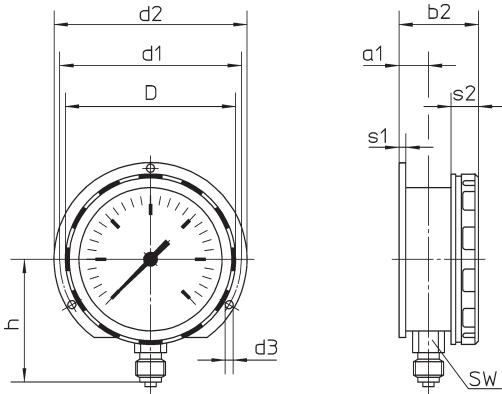
Bottom connection,
(no additional code letter)



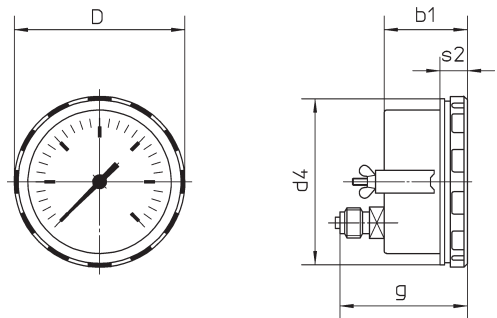
Lower back connection,
code letter: **r**



Bottom connection,
rear flange,
code letters: **Rh**



Lower back connection,
U-clamp for panel mounting,
code letters: **rT**



Dimensional Data (mm / inches) and Weight (kg / lb)

Nominal Case Size	a	a1	b	b1	b2	c	c1	c2	c3	D1	d1	d2	d3	d4	e
63 2½"	10 .39	13 .51	32 1.26	38 1.50	35 1.38	5 .20	2 .08		13 .51	75 2.95	85 3.35	3.6 .14	73 2.87	18 .71	

G	G1	g	g1	h±1	h1±1	s1	s2	SW	Weight (approx.)	
									RK	RKG
G ¼ B ¼" BSP	¼" NPT	56 2.21		54 2.13		3 .12	12 .47	14 .55	.14 .31	.20 .44

The information in this leaflet is given in good faith, but we reserve the right to make changes without notice.