

Diaphragm Pressure Gauges for Chlorine Metering Services

Case Ø 63 (2½")

Model

PsPK 63-2

Vertical Diaphragm, Polyamide Screw Ring Case

Application

Diaphragm pressure gauges model PsPK 63-2 are especially developed for chlorine metering services. The lower half with male process connection is made from one piece out of carbon steel without enamel on the wetted parts. The diaphragm is protected by a fine silver foil. The case out of glass fiber reinforced polyamide 6B with screw ring protects the inner parts from all harmful influences from outside (chloric gas!). The gauge is calibrated with dry air.

Nom. Case Size

63 (2½")

Accuracy (EN 837-3)

Class 4 (for gauges with protection foil covering the diaphragm)

Pressure Ranges (EN 837-3)

0-1 bar (15 psi) to 0-40 bar (600 psi)

also all corresponding standard vacuum and compound ranges (compare reverse side);

most common ranges: -1-0 bar and 0-16 bar

Pressure Limitations

Steady pressure and maximum: full scale value

Cyclic pressure: 90% of full scale value

Temperature Limitations

Ambient temperature : -20 to +50 °C (-4 to +122 °F)

Medium temperature: max. +50 °C (+122 °F)

Temperature Caused Error

The accuracy error caused by media or ambient temperatures differing from +20 °C (+68 °F) is significant. In accordance with EN 837-3 it may be up to .8% per each 10 °C (+18 °F).

Protection Type (EN 60529 / IEC 529)

IP 65

Standard Configuration

Connection

G ¼ B (¼" BSP) with inlet port orifice Ø 5 mm (.20"), bottom connection (standard), or center back connection (code letters: **rm**) at option; connection and lower half carbon steel, made from one piece

Diaphragm

Vertical diaphragm carbon steel with Ag-foil

O-Ring

FPM (Viton)

Movement

Brass/German silver

Dial

Aluminum alloy, black figures, white background

Pointer

Aluminum alloy black

Case and Ring

Glass fiber reinforced polyamide 6B, screw ring; case sealed against influences from outside, blow-out disc (NBR, "buna N")

Lens

Acrylic glass lens



Further information about diaphragm pressure gauges with vertical diaphragms can be found on general information leaflet 4000.

Optional Special Configurations

- Other process connections upon request
- Wetted parts 316 stainless steel or others upon request
- Wear and corrosion resistant stainless steel movement
- Special scales, such as dual scales or others
- 3 x overrange protection up to max. 50 bar (700 psi)
- Reed-Switch upon request

How to Order:

Please specify:

Model code:

PsPK 63

Wetted parts:

Carbon steel / Ag-foil,
ordering code **-2**

Case configuration:
(see reverse side)

rm or **rmT**
(standard case = bottom con-
nection = without code letter)

Pressure range:

Standard ranges acc. to EN 837-3,
e.g. **-1-0 bar**

Process connection:

G ¼ B (¼" BSP)

Special configurations: (see above)

Examples for Ordering Information:

- PsPK 63-2, -1-0 bar, ¼" BSP
- PsPK 63-2, r, 16 bar, ¼" BSP



ARMATURENBAU GmbH

Manometerstraße 5 • D-46487 Wesel - Ginderich
Phone: (0 28 03) 91 30 - 0 • Fax: (0 28 03) 10 35
armaturenbau.com • mail@armaturenbau.com



Subsidiary Company and Sales East Germany and Eastern Europe

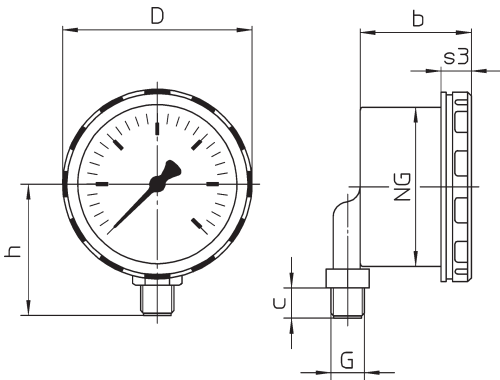
MANOTHERM Beierfeld GmbH

Am Gewerbepark 9 • D-08340 Beierfeld
Phone: (0 37 74) 58 - 0 • Fax: (0 37 74) 58 - 545
manotherm.com • mail@manotherm.com

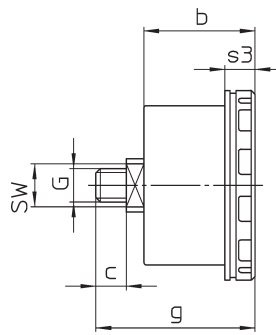
4310
9/03

Case Configurations, Code Letters, Dimensional Data and Weight

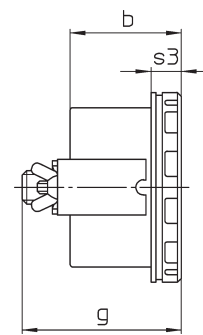
Bottom connection,
without code letters



Center back connection,
code letters: **rm**



Center back connection,
U-clamp for panel mounting,
code letters: **rmT**



Dimensional Data (mm / inches) and Weight (kg / lb)

Nominal Case Size	D	b	c	g	G	h ^{±1}	s3	SW	Weight (approx.)
63 2 1/2"	75 2.95	44 1.73	12 .47	63 2.48	G 1/4 B 1/4" BSP	52 2.05	12 .47	17 .67	0.250 kg .55 lb

Pressure Ranges / Scale Divisions:

Pressure Range bar	Subdivision bar	Pressure Range " vac. / psi	Subdivision " vac. / psi
- 1200 / 0 mbar - 1 / 0 bar	20 mbar 0.02 bar	30" vac.	.5" vac.
- 1 / + 0,6	0.05	30" vac./ 15	1" vac./ .5
- 1 / + 1,5	0.1	30" vac./ 30	1" vac./ .5
- 1 / + 3	0.2	30" vac./ 60	2" vac./ 2
- 1 / + 5	0.2	30" vac./100	5" vac./ 2
- 1 / + 9	0.2	30" vac./160	5" vac./ 2
- 1 / +15	0.5	30" vac./200	5" vac./ 5
- 1 / +24	1.0	30" vac./300	10" vac./ 5
1.0	0.02	15	.25
1.6	0.05		
2.5	0.1	30	.5
4	0.2	60	1
6	0.2	100	1
10	0.2	160	2
16	0.5	200	2
		300	5
25	1.0	400	5
40	2.0	600	20

The information in this leaflet is given in good faith, but we reserve the right to make changes without notice.